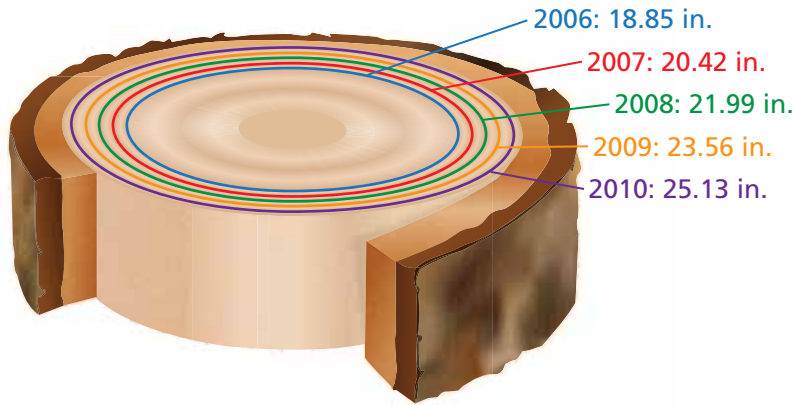


**Tree Growth** The figure shows the circumference of a tree over a 4-year period. In Exercises 9 and 10, use the figure. (See Example 3.)



**DATA** 9. Make a scatter plot of the data. Use the scatter plot to estimate the circumference of the tree in 2011.

10. Find the diameter of the tree for each year. Make a scatter plot showing the diameter for each year. Use the scatter plot to predict the diameter of the tree in 2011.

(The formula for the diameter of a circle is  $d = \frac{C}{\pi}$ .)

11. **Black-and-White Warbler** The figure shows the migration of the Black-and-white Warbler. Describe any linear patterns that you see in the figure. (See Example 4.)

12. **Distance Traveled** A Black-and-white Warbler flies about 20 miles per day across the United States during migration. Complete the table to estimate the distance that the Black-and-white Warbler travels between March 30 and each date. (See Example 4.)

Day	Distance
March 30	0
March 31	
April 2	
April 6	
April 13	
April 21	
May 1	

