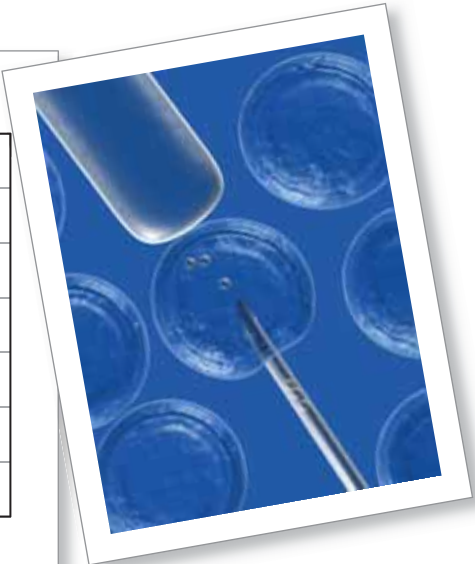
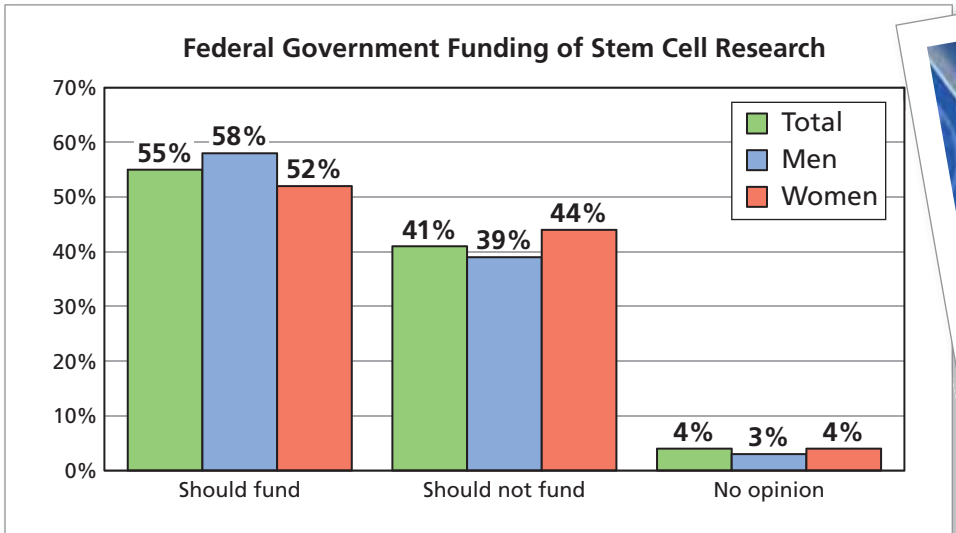


# 1.3 Exercises

**Stem Cell Research** The bar graph shows the results of a poll of adult Americans about federal government funding of stem cell research. In Exercises 1–4, use the bar graph. (See Example 1.)



1. There are about 117,000,000 adult American men. About how many of these men think the federal government should fund stem cell research?
2. There are about 123,000,000 adult American women. About how many of these women think the federal government should fund stem cell research?
3. Describe two ways to find how many American adults have no opinion about federal government funding of stem cell research. Do both ways result in the same answer? Explain.
4. Are the results for men significantly different than the results for women? Explain.

**Stem Cell Research** The circle graph shows the results of a poll of adult Americans about the moral acceptability of stem cell research. In Exercises 5–8, use the circle graph. (See Example 2.)

5. In a city, 412,230 adults think that stem cell research is morally wrong. Estimate the population of the city.
6. How many adults from the city in Exercise 5 think stem cell research is morally acceptable?
7. Conduct a poll on stem cell research by asking at least 30 people for their opinion. Compare your results to the bar graph above and the circle graph.
8. Summarize the results of your poll in Exercise 7 graphically. Explain your choice of graph.

